



AMACOM



**USB 2.0 FLASH KEY**

**Memory Bar Security Software**

**Installation & User Manual**

## **Installing The Memory Bar Software**

- 1) Turn your computer on and wait for Windows to load. If you are using Windows 2000/XP you must login as a user with Administrator rights in order to install the software.
- 2) Once Windows has loaded please insert the Memory Bar installation CD into your computers CD/DVD drive.
- 3) Click on 'Start' and select 'Run' from the menu.
- 4) In the 'Open' field type the following command replacing X with the actual drive letter of your CD/DVD drive: -  
  
X:\memorybar\setup.exe
- 5) Click on the 'OK' button and the installation of the Memory Bar software should start.
- 6) You should follow the on screen instructions to complete the installation of the Memory Bar software on your computer.
- 7) Once the installation has completed we would recommend that you restart your computer.

## **What Are Secure & Public Areas?**

Before you can use the Memory Bar to secure the data on your Amacom Flash Key you must partition it into a Secure area and/or a Public area.

The Public area will be visible to all users that plug your Flash Key into a computer and is useful for storing items that are not confidential or that you need to share with other users.

The Secure area will be password protected and will only be visible once logged in to using the correct password. This area is useful for storing items which are confidential and that you do not wish other people to have access to.

When creating your Secure and/or Public areas you can choose from the following configurations:

-

- 1) The whole capacity as a Public area (this is the default setting)
- 2) The whole capacity as a Secure area
- 3) Some of the capacity as a Public area and the remainder of the capacity as a Secure area.

If you wish to use the whole of the capacity of your Flash Key as a Public area then you do not need to configure anything further, as this is the default setting when you receive your Flash Key.

However should you wish to use your Flash Key in one of the other configurations, then you will need to follow the instructions in the following section to partition your Flash Key and select the password you will use.

## Setting Up The Secure & Public Areas

Before you can set up the Secure and Public areas on your Flash Key please ensure that you have installed the Memory Bar software using the instructions in this manual.

- 1) Turn your computer on and wait for Windows to load. Once Windows has finished loading insert the Flash Key into one of your computers USB ports.
- 2) With the Flash Key plugged into your computer, double click on the 'Memory Bar' icon which will be located on your computers desktop.
- 3) Once the Memory Bar software has finished loading you will be presented with a window (fig. 1).

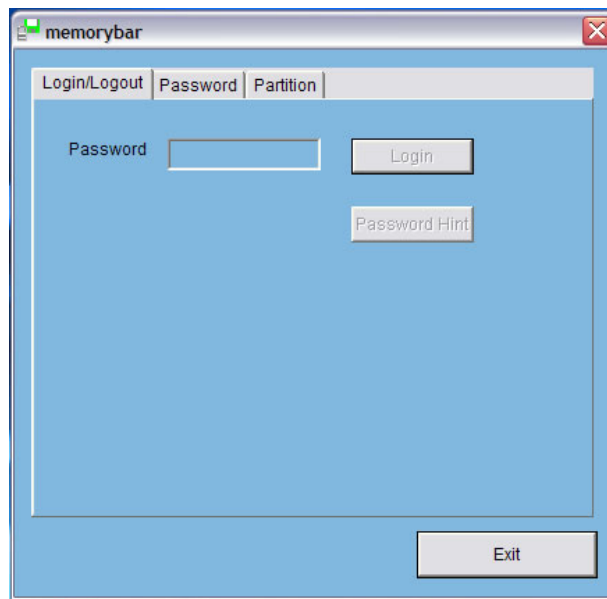


Figure 1

- 4) Click on the 'Partition' tab and you will be presented with a new window (fig. 2).

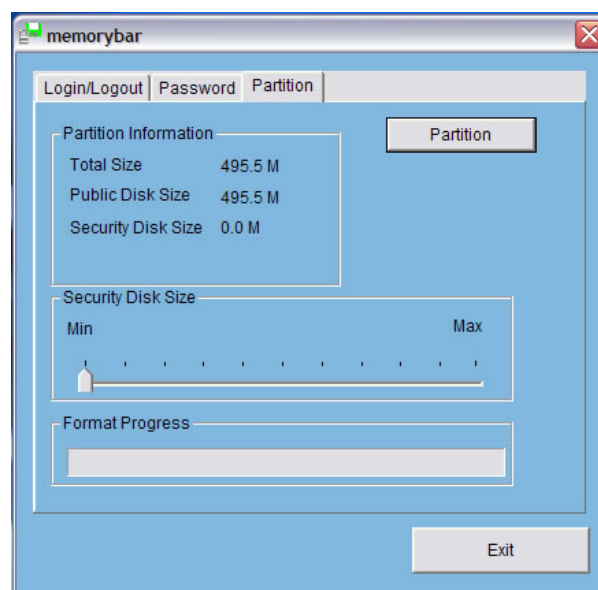


Figure 2

- 5) Using the 'Security Disk Size' slider on the Partition screen you can change the size of the Secure and Public areas. If you move the slider fully to Max then the whole capacity of the Flash Key will become a Secure area. If you move the slider to a position between Min & Max then you will create a Secure area and a Public area, with the Secure area becoming larger and the Public area becoming smaller the further you move the slider towards Max.

You can see the actual capacities that the Secure and Public areas will be using the 'Partition Information' box on the Partition window.

- 6) Once you have set the slider according to your requirements click on the 'Partition' button to begin the partitioning process. You will be warned that partitioning the Flash Key will erase all data (fig. 3), so you should only click on 'Partition' if you are sure. If you need to copy data from the Flash Key you should click 'Exit' to stop the process.

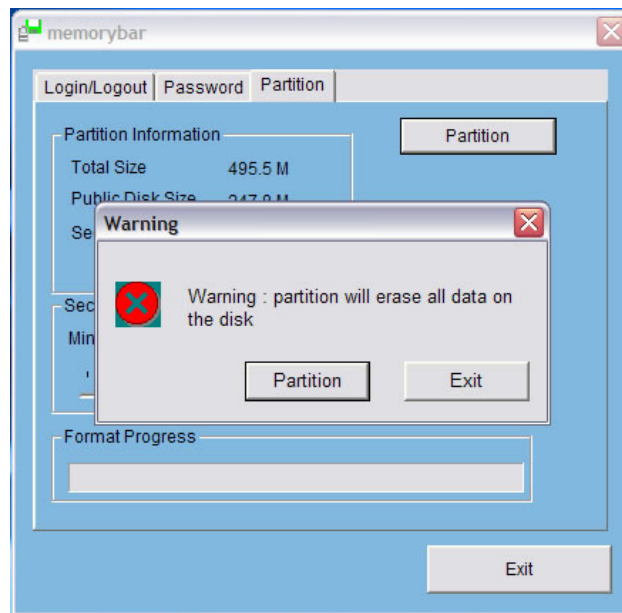


Figure 3

- 7) During the partitioning process you will see a progress bar in the 'Format Status' box. You should not unplug the Flash Key whilst the partitioning process is happening.
- 8) Once the partitioning process has completed a confirmation box will appear (fig. 4) to tell you that the process has completed successfully and that the default password of 0000 has been set. You should click 'OK' on this box and then unplug the Flash Key from your computer.



Figure 4

- 9) When you reconnect the Flash Key to your computer, you will only be able to access the Public area (if you allocated space for one) using the drive letter for the Flash Key. In order to access the Secure area of your Flash Key you will need to login into it using your password – you can use the section titled 'Accessing The Secure Area' in this manual to learn how to do this.

## Accessing The Secure Area

In order to access the Secure Area of your Flash Key you must login to it using the password that has been set. Please follow the instructions below to access your Secure area: -

- 1) With the Flash Key connected to your computer, double click on the 'Memory Bar' icon on your desktop.
- 2) When the Memory Bar software has finished loading you will be presented with a window (fig. 5). In the 'Password' field you should type the password that has been set to access the Secure area (if you have not changed the password, then the default will be 0000) and click on the 'Login' button.

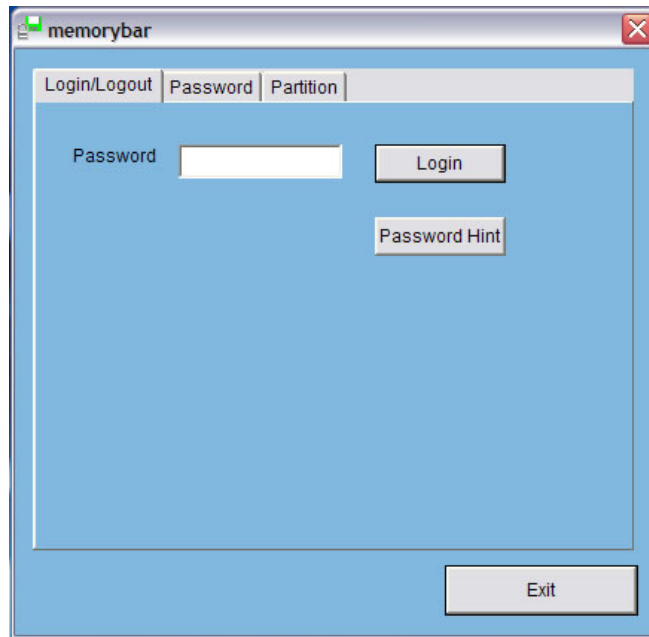


Figure 5

- 3) If login is successful a box will appear to confirm this. The Secure area will now be unlocked and will be accessible using the same drive letter as used for the Public area.

As you can only have access to either the Secure area or the Public area at any one time, in order to access the Public area or to prevent people from viewing the Secure area you should Logout of the Secure area.

- 4) To logout of the Secure area you should double click on the Memory Bar icon in your taskbar (fig. 6). Once the Memory Bar software opens you can click on the 'Logout' button, once the logout has completed successfully a box will appear to confirm this.



Figure 6

## Changing The Secure Area Password

If you want to change the password used to access the Secure area, you can use the 'Password' tab of the Memory Bar software. The instructions below will guide you through the steps needed to change the password.

- 1) With the Flash Key connected to your computer double click on the 'Memory Bar' icon on your desktop.
- 2) When the Memory Bar software open click on the 'Password' tab, which will display the password changing window (fig. 7).

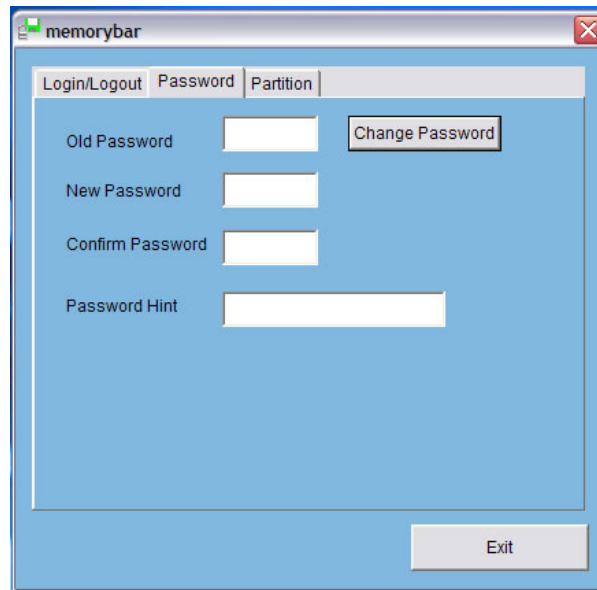


Figure 7

- 3) To change the password you should type your old password into the 'Old Password' field (this will be 0000 if you have not previously changed the default) and then type the new password into the 'New Password' field. You must ensure that you type the same password as your new password into the 'Confirm Password' field, otherwise the password will not be changed. You can if you wish type something into the 'Password Hint' field which can be used to provide a hint at the login screen should you not be able to remember the password – you should ensure that any hint you use does not make it obvious to other users what your password is.
- 4) Once you have completed all the required fields you can click on the 'Change Password' button. A box confirming successful changing of the password will appear once the password has been changed.